

# 쉽게 알 수 있는 어선의 야간 표시 등화, 알고 보면 쉬워요!



이 등화는 어로에 종사하는 선박이 표시하여야 하는 등화로 대수속력이 있는 경우 항해등을 함께 표시

그물을 끄는 어로에 종사하는 선박:



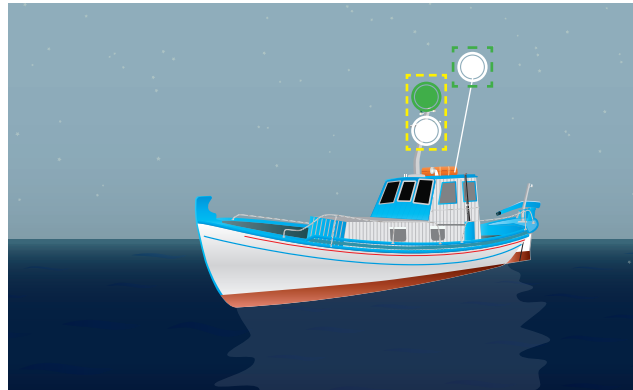
전주등 한 쌍 등화

항해 중(선박길이 50m 이상)



※ 선박길이 50m미만은 [백] 마스트등 등화 생략 가능

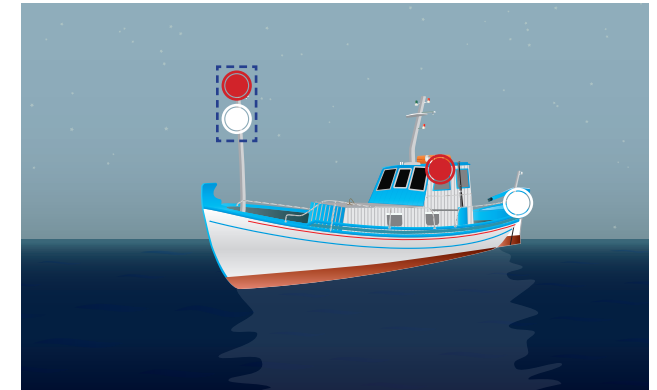
정박 중(선박길이 50m 이상 선박)



그물을 끄는 이외의  
어로에 종사하는 선박

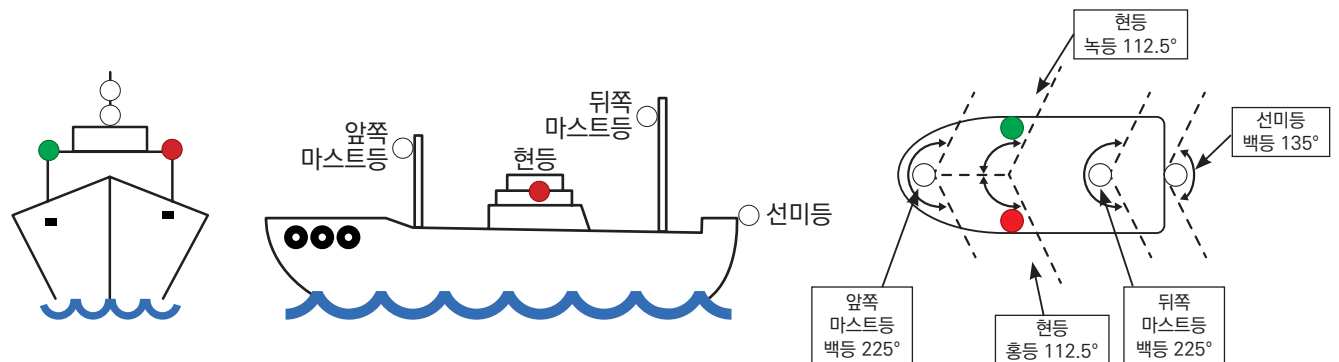
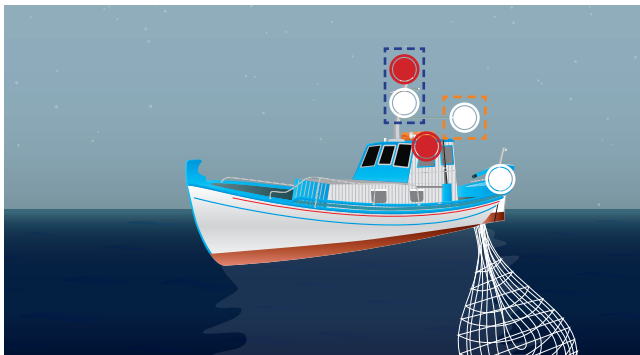


전주등 한 쌍 등화



150m 이상의 어구를 낸 선박:

어구를 내고 있는 방향을 표시하는 [백] 전주등 등화



해양수산부  
중앙해양안전심판원

## A stylized illustration of a ship at night. The ship has a white superstructure with a searchlight on top, and a red hull. Two searchlights are shown: one on the ship's mast and one on the water, both casting beams of light. The background is dark blue, representing the night sky and water.

A stylized illustration of a cargo ship sailing on a dark blue sea under a light blue sky with white stars. The ship is black with a red hull and a white superstructure. It has a white funnel with a red band and a red band on the side of the superstructure. The ship is carrying several white cargo containers. There are three white circular markers on the ship: one on the funnel, one on the side of the superstructure, and one on the hull.

A stylized illustration of a cargo ship at night. The ship is dark blue with a red hull. The mast area is highlighted with a yellow dashed rectangular box. Inside this box, there are two red circular lights and one white circular light. Outside the box, there is another white circular light on the ship's structure and a white circular light on the horizon. The background is a dark blue night sky with small white stars.

A diagram showing a tugboat pushing a barge. The tugboat is on the left, and the barge is on the right. A dashed line indicates the distance between them is 200m 미만 (less than 200m).

200m 초과

예인선열의 길이가 200m 초과임을  
표시하는 마스트등 등화

Diagram illustrating the total value: 200 + 200 = 400. The diagram shows two separate groups, each enclosed in a green dashed rectangle. Each group contains two circles, each with the Korean word '백' (100) inside, representing 200 won per group.

